



**Orange
Book**

WISDOM

CONTENTS

1 ABOUT US 02

2 Cordless Headlamp

KL2.5LM(A) MA Approval	03
WISE LITE 2 MSHA Approval	04
LAMP 3 CNEX Approval	05
LAMP 3 UL & CSA Class I Div.1 Approval	06
LAMP 3 ATEX ib Gb Approval	07
LAMP 3 CE Approval	08
LAMP 3 Plus CE Approval	09
LAMP 4 UL & CE Approval	10
LAMP 6 ATEX & IECEX & ANZEx ia Ma Approval	11

3 Corded Cap Lamp

KL5LM(B) MA Approval	12
KL5M CE Approval	13
KL5M MSHA Approval	14
KL5M ATEX & IECEX ia Ma Approval	15
KL6M CE Approval	16
KL6M ATEX & IECEX ia Ma Approval	17
KL8M CE Approval	18
KL8M MSHA Approval	19
KL8M ATEX & IECEX ia Ma Approval	20
KL9M CE Approval	21
KL9M ATEX & IECEX ia Ma Approval	22
KL12M CE Approval	23
KL12M MSHA Approval	24
KL12M ATEX & IECEX ia Ma Approval	25
KL13M CE Approval	26
KL13M ATEX & IECEX ia Ma Approval	27

4 Flashlight

Aurora Pro UL & CSA Class I Div.1 Approval	28
--	----

5 Personal Safety Strobe Light

Pharos 7 MSHA Approval	29
Duplex CE Approval	30

6 Industrial Safety Headlamp

ELF CE Approval	31
-----------------	----

7 Safety Hard Hat

Helipad Type I Class G with Front and Rear Holders	32
Helipad Type I Class G with Front Holder	33

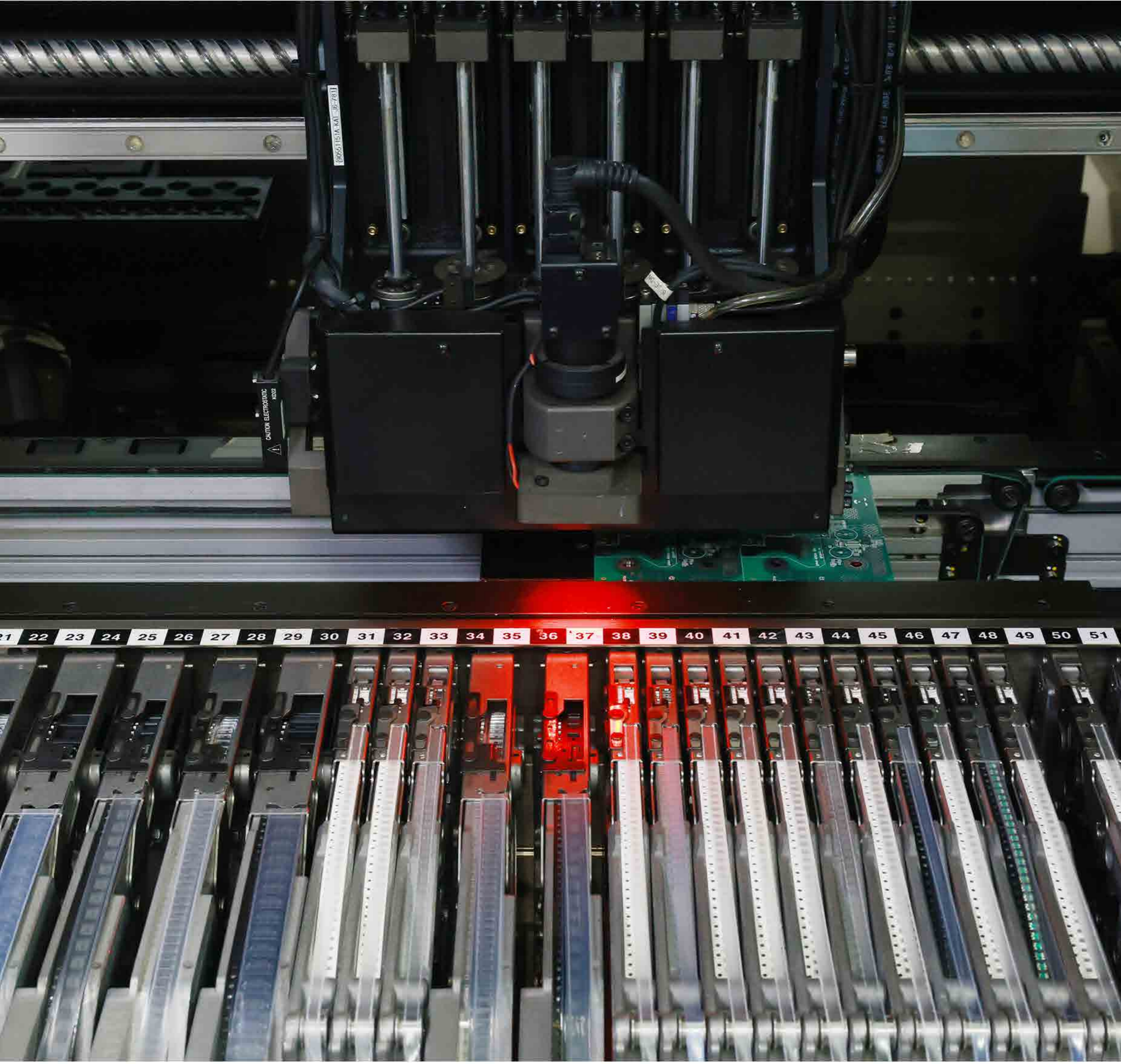
8 Panel Light

DurCore CE Approval	34
---------------------	----

9 Charging Equipment

For Cordless Headlamp	35
For Corded Cap Lamp	37
For Flashlight	39
For Personal Safety Strobe Light & Industrial Safety Headlamp	40





ABOUT US

『Safety is Our Priority』

Since its inception, WISDOM has upheld a steadfast commitment to safety - continuously striving to improve the working environment and protect industrial workers. Whether it be industry leading lighting products or our newly released Helipad hard hat, our dedication to innovation in industrial lighting and personnel protection products has led to the development of a robust, large-scale industrial chain, establishing us as a trusted and dependable lighting and industrial safety solutions provider.

Environmental responsibility is a core value at WISDOM. We ensure that all materials and production processes fully comply with relevant regulations and standards.

Innovation drives everything we do. Our R&D efforts are focused on minimizing risks - from material selection and design planning to product validation. We aim to enhance product longevity and performance through thoughtful design and advanced manufacturing techniques. As a result, we actively protect our innovations and currently hold over 200 invention patents.

Operating under a Just-In-Time (JIT) model keeps us agile and efficient. While we strive for process optimization, we also prioritize cost control to maintain the competitiveness and vitality of our products.

Quality assurance is fully integrated into our operations, with in-house controls at every stage - from IQC (Incoming Quality Control) to OQC (Outgoing Quality Control). But quality control is not our endpoint; we believe standardized processes are essential for consistency and excellence.

We nurture a culture of creativity and forward-thinking, always seeking new ideas and solutions to make a lasting impact in the global market.

KL2.5LM(A)

Intended for Use in Coal Mine in China

MA Ex sI Mb
MAG140054

SKU # CKC196



Material	Polycarbonate	Operating Modes	Low & High
Dimension	L 3.3" * W 2.7" * D 1.9"	Luminous Flux	74 Lm & 117 Lm
Weight	0.40 lbs	Illumination Intensity	80 Lux & 7,000 Lux
Battery Capacity	2,500 mAh	Run Time	24 H & 11 H
Battery Life Cycle	500 cycles	Illumination Range	18 m & 168 m
Input Voltage	5 V	Illumination Angle	120 degrees
LED Source Life	100,000 H	Waterproof	IP68 & IP69
LED Power	0.36 W & 0.81 W	Additional Features	S.O.S



WISE LITE 2

Intended for Use in Coal Mine
in North America



19-A160002-0

SKU # CKC352



Material	Polycarbonate	Operating Modes	Low & High
Dimension	L 3.3" * W 2.7" * D 1.9"	Luminous Flux	83 Lm & 167 Lm
Weight	0.40 lbs	Illumination Intensity	80 Lux & 8,500 Lux
Battery Capacity	7,000 mAh	Run Time	60 H & 16 H
Battery Life Cycle	1,200 cycles	Illumination Range	18 m & 185 m
Input Voltage	5 V	Illumination Angle	140 degrees
LED Source Life	100,000 H	Waterproof	IP68 & IP69
LED Power	0.36 W & 1.20 W	Additional Features	S.O.S

LAMP 3

Intended for Use in Potentially Explosive Gas Atmospheres
Excluding Coal Mine in China



CNEx22.4317X
Ex ib op is IIB T4 Gb

SKU # CKC312



Material	Polycarbonate	Operating Modes	Low & High
Dimension	L 3.3" * W 2.7" * D 1.9"	Luminous Flux	40 Lm & 240 Lm
Weight	0.40 lbs	Illumination Intensity	50 Lux & 11,000 Lux
Battery Capacity	7,000 mAh	Run Time	60 H & 13 H
Battery Life Cycle	1,200 cycles	Illumination Range	15 m & 210 m
Input Voltage	5 V	Illumination Angle	120 degrees
LED Source Life	100,000 H	Waterproof	IP68 & IP69
LED Power	0.21 W & 1.60 W	Additional Features	S.O.S



LAMP 3

Intended for Use in Potentially Explosive Gas Atmospheres
Excluding Coal Mine in North America

SGS I.S. Exi, CL I, Div.1, Grps C and D, T4
-20°C ≤ Ta ≤ 40°C
801112

SKU # CKC278



Material	Polycarbonate	Operating Modes	Low & High
Dimension	L 3.3" * W 2.7" * D 1.9"	Luminous Flux	40 Lm & 240 Lm
Weight	0.40 lbs	Illumination Intensity	50 Lux & 11,000 Lux
Battery Capacity	7,000 mAh	Run Time	60 H & 13 H
Battery Life Cycle	1,200 cycles	Illumination Range	15 m & 210 m
Input Voltage	5 V	Illumination Angle	120 degrees
LED Source Life	100,000 H	Waterproof	IP68 & IP69
LED Power	0.21 W & 1.60 W	Additional Features	S.O.S

LAMP 3

Intended for Use in Potentially Explosive Gas Atmospheres
Excluding Coal Mine in EU



II 2G Ex ib op is IIB T4 Gb
-20°C ≤ Ta ≤ 40°C

SKU # CKC182



Material	Polycarbonate	Operating Modes	Low & High
Dimension	L 3.3" * W 2.7" * D 1.9"	Luminous Flux	40 Lm & 240 Lm
Weight	0.40 lbs	Illumination Intensity	50 Lux & 11,000 Lux
Battery Capacity	7,000 mAh	Run Time	60 H & 13 H
Battery Life Cycle	1,200 cycles	Illumination Range	15 m & 210 m
Input Voltage	5 V	Illumination Angle	120 degrees
LED Source Life	100,000 H	Waterproof	IP68 & IP69
LED Power	0.21 W & 1.60 W	Additional Features	S.O.S



LAMP 3

Intended for Use in Mine



SKU # CKC197



Material	Polycarbonate	Operating Modes	Low & High
Dimension	L 3.3" * W 2.7" * D 1.9"	Luminous Flux	50 Lm & 265 Lm
Weight	0.40 lbs	Illumination Intensity	1,800 Lux & 12,000 Lux
Battery Capacity	7,000 mAh	Run Time	60 H & 13 H
Battery Life Cycle	1,200 cycles	Illumination Range	85 m & 219 m
Input Voltage	5 V	Illumination Angle	120 degrees
LED Source Life	100,000 H	Waterproof	IP68 & IP69
LED Power	0.24 W & 1.71 W	Additional Features	S.O.S

LAMP 3 Plus

Intended for Use in Mine



SKU # CKC364



Material	Polycarbonate	Operating Modes	Low, Medium & High
Dimension	L 3.3" * W 2.7" * D 1.9"	Luminous Flux	50 Lm, 265 Lm & 533 Lm
Weight	0.40 lbs	Illumination Intensity	1,800 Lux, 12,000 Lux & 25,000 Lux
Battery Capacity	7,000 mAh	Run Time	60 H, 13 H & 5 H
Battery Life Cycle	1,200 cycles	Illumination Range	85 m, 219 m & 316 m
Input Voltage	5 V	Illumination Angle	120 degrees
LED Source Life	100,000 H	Waterproof	IP68 & IP69
LED Power	0.24 W, 1.71 W & 4.20 W	Additional Features	S.O.S





LAMP 4

Intended for Use in
Outdoor Activities



SKU # CKC209



Material	Polycarbonate	Operating Modes	Low, Medium & High
Dimension	L 3.3" * W 2.7" * D 1.9"	Luminous Flux	50 Lm, 265 Lm & 533 Lm
Weight	0.40 lbs	Illumination Intensity	1,800 Lux, 12,000 Lux & 25,000 Lux
Battery Capacity	7,000 mAh	Run Time	60 H, 13 H & 5 H
Battery Life Cycle	1,200 cycles	Illumination Range	85 m, 219 m & 316 m
Input Voltage	5 V	Illumination Angle	120 degrees
LED Source Life	100,000 H	Waterproof	IP68 & IP69
LED Power	0.24 W, 1.71 W & 4.20 W	Additional Features	S.O.S & Power Bank

LAMP 6

Intended for Use in Coal Mine



I M1 Ex ia op is I Ma EN 60079-35-1
0°C ≤ Ta ≤ 40°C



Ex ia op is I Ma IEC 60079-35-1
0°C ≤ Ta ≤ 40°C

ANZEx

SKU # CKC179



Material	Polycarbonate
Dimension	L 3.3" * W 2.7" * D 1.9"
Weight	0.40 lbs
Battery Capacity	7,000 mAh
Battery Life Cycle	1,200 cycles
Input Voltage	6.8 V
LED Source Life	100,000 H
LED Power	0.24 W & 1.71 W

Operating Modes	Low & High
Luminous Flux	50 Lm & 240 Lm
Illumination Intensity	1,800 Lux & 11,000 Lux
Run Time	60 H & 13 H
Illumination Range	85 m & 210 m
Illumination Angle	120 degrees
Waterproof	IP68 & IP69
Additional Features	S.O.S



KL5LM(B)

Intended for Use in Coal Mine in China

MA Ex sI Mb
MAG140053

SKU # CKL137



Material	Polycarbonate	Operating Modes	Low & High
Dimension	W 3.7" * D 1.5" * H 4.1"	Luminous Flux	82 Lm & 178 Lm
Weight	1.20 lbs	Illumination Intensity	11,000 Lux & 20,000 Lux
Battery Capacity	5,000 mAh	Run Time	36 H & 11 H
Battery Life Cycle	500 cycles	Illumination Range	210 m & 283 m
Input Voltage	4.2 V	Illumination Angle	120 degrees
LED Source Life	100,000 H	Waterproof	IP68 & IP69
LED Power	0.42 W & 1.29 W	Additional Features	S.O.S

KL5M

Intended for Use in Mine



SKU # CKL364



Material	Polycarbonate	Operating Modes	Low & High
Dimension	W 3.7" * D 1.5" * H 3.4"	Luminous Flux	82 Lm & 340 Lm
Weight	1.09 lbs	Illumination Intensity	11,000 Lux & 24,000 Lux
Battery Capacity	7,800 mAh	Run Time	60 H & 13 H
Battery Life Cycle	1,200 cycles	Illumination Range	210 m & 310 m
Input Voltage	4.2 V	Illumination Angle	120 degrees
LED Source Life	100,000 H	Waterproof	IP68 & IP69
LED Power	0.42 W & 1.92 W	Additional Features	S.O.S





KL5M

Intended for Use in Coal Mine in North America



SKU # CKL321



Material	Polycarbonate	Operating Modes	Low & High
Dimension	W 3.7" * D 1.5" * H 3.4"	Luminous Flux	82 Lm & 279 Lm
Weight	1.09 lbs	Illumination Intensity	11,000 Lux & 20,000 Lux
Battery Capacity	8,700 mAh	Run Time	60 H & 16 H
Battery Life Cycle	1,200 cycles	Illumination Range	210 m & 283 m
Input Voltage	4.2 V	Illumination Angle	120 degrees
LED Source Life	100,000 H	Waterproof	IP68 & IP69
LED Power	0.42 W & 1.50 W	Additional Features	S.O.S

KL5M

Intended for Use in Coal Mine



IM1 Ex ia I Ma EN 60079-35-1
0°C ≤ Ta ≤ 40°C



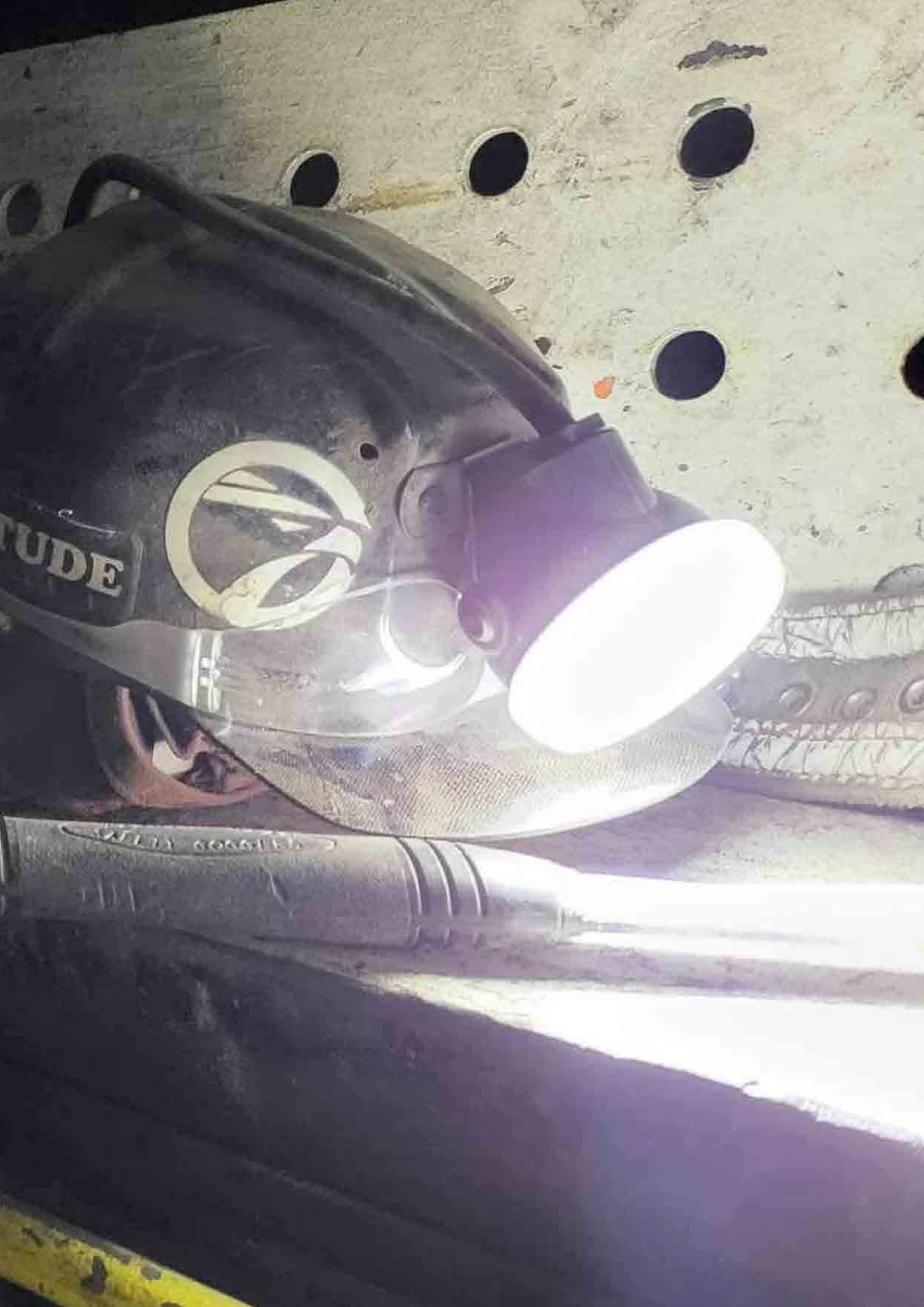
Ex ia I Ma IEC 60079-35-1
0°C ≤ Ta ≤ 40°C

SKU # CKL355



Material	Polycarbonate	Operating Modes	Low & High
Dimension	W 3.7" * D 1.5" * H 3.4"	Luminous Flux	82 Lm & 340 Lm
Weight	1.09 lbs	Illumination Intensity	11,000 Lux & 24,000 Lux
Battery Capacity	7,800 mAh	Run Time	60 H & 13 H
Battery Life Cycle	1,200 cycles	Illumination Range	210 m & 310 m
Input Voltage	4.2 V	Illumination Angle	120 degrees
LED Source Life	100,000 H	Waterproof	IP68 & IP69
LED Power	0.42 W & 1.92 W	Additional Features	S.O.S





KL6M

Intended for Use in Mine



SKU # CKL383



Material	Polycarbonate	Operating Modes	Low & High
Dimension	W 3.7" * D 1.5" * H 3.4"	Luminous Flux	82 Lm & 340 Lm
Weight	1.07 lbs	Illumination Intensity	11,000 Lux & 24,000 Lux
Battery Capacity	7,800 mAh	Run Time	60 H & 13 H
Battery Life Cycle	1,200 cycles	Illumination Range	210 m & 310 m
Input Voltage	4.65 V	Illumination Angle	120 degrees
LED Source Life	100,000 H	Waterproof	IP68 & IP69
LED Power	0.42 W & 1.92 W	Additional Features	S.O.S

KL6M

Intended for Use in Coal Mine



I M1 Ex ia I Ma EN 60079-35-1
0°C ≤ Ta ≤ 40°C



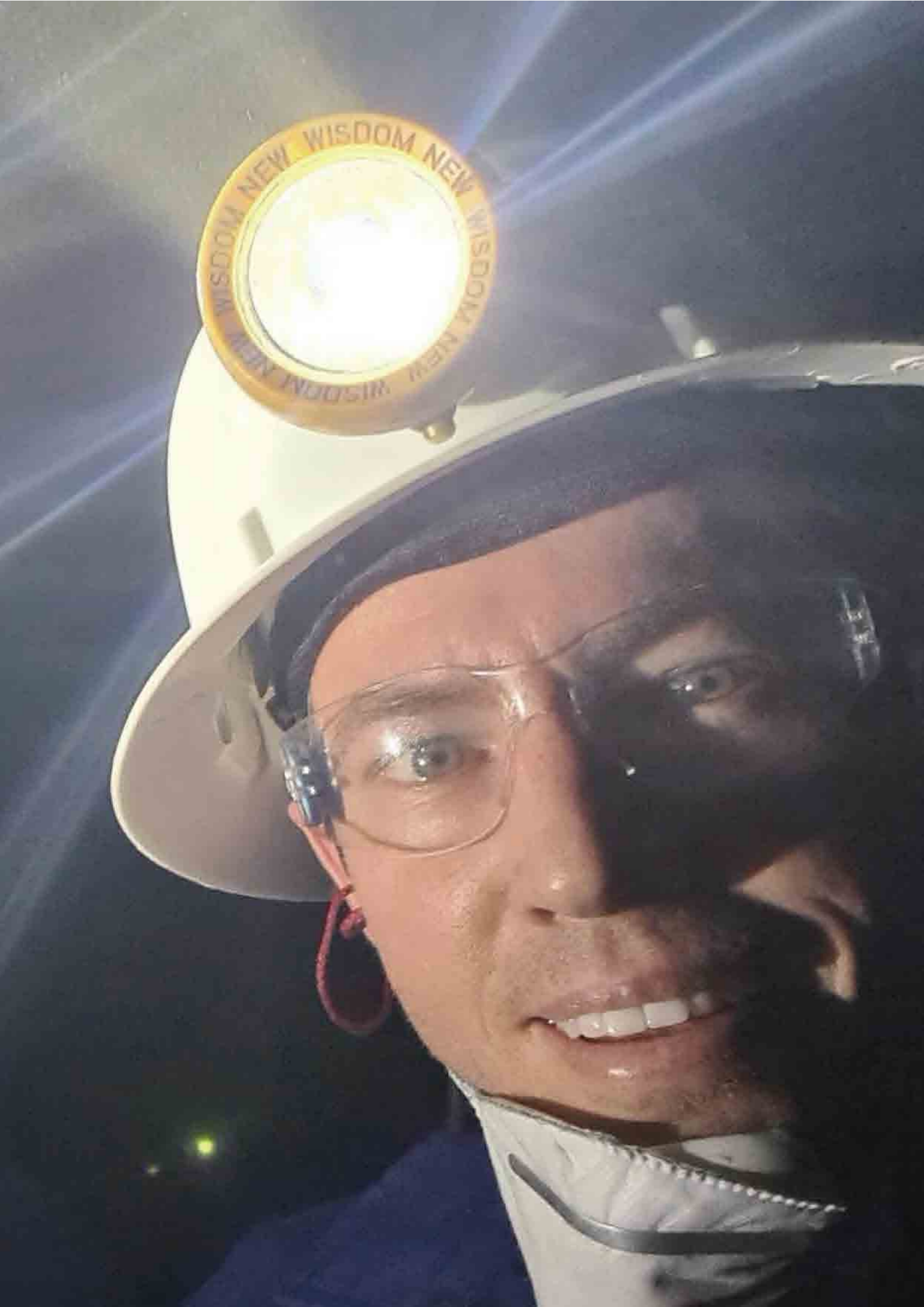
Ex ia I Ma IEC 60079-35-1
0°C ≤ Ta ≤ 40°C

SKU # CKL432



Material	Polycarbonate	Operating Modes	Low & High
Dimension	W 3.7" * D 1.5" * H 3.4"	Luminous Flux	82 Lm & 340 Lm
Weight	1.07 lbs	Illumination Intensity	11,000 Lux & 24,000 Lux
Battery Capacity	7,800 mAh	Run Time	60 H & 13 H
Battery Life Cycle	1,200 cycles	Illumination Range	210 m & 310 m
Input Voltage	4.65 V	Illumination Angle	120 degrees
LED Source Life	100,000 H	Waterproof	IP68 & IP69
LED Power	0.42 W & 1.92 W	Additional Features	S.O.S





KL8M

Intended for Use in Mine



SKU # CKL365



Material	Polycarbonate	Operating Modes	Low & High
Dimension	W 3.7" * D 1.5" * H 4.1"	Luminous Flux	82 Lm & 430 Lm
Weight	1.20 lbs	Illumination Intensity	11,000 Lux & 30,000 Lux
Battery Capacity	10,400 mAh	Run Time	60 H & 13 H
Battery Life Cycle	1,200 cycles	Illumination Range	210 m & 346 m
Input Voltage	4.2 V	Illumination Angle	120 degrees
LED Source Life	100,000 H	Waterproof	IP68 & IP69
LED Power	0.42 W & 2.67 W	Additional Features	S.O.S

KL8M

Intended for Use in Coal Mine in North America



SKU # CKL323



Material	Polycarbonate	Operating Modes	Low & High
Dimension	W 3.7" * D 1.5" * H 4.1"	Luminous Flux	82 Lm & 279 Lm
Weight	1.20 lbs	Illumination Intensity	11,000 Lux & 20,000 Lux
Battery Capacity	11,600 mAh	Run Time	60 H & 20 H
Battery Life Cycle	1,200 cycles	Illumination Range	210 m & 283 m
Input Voltage	4.2 V	Illumination Angle	120 degrees
LED Source Life	100,000 H	Waterproof	IP68 & IP69
LED Power	0.42 W & 1.50 W	Additional Features	S.O.S





KL8M

Intended for Use in Coal Mine



I M1 Ex ia I Ma EN 60079-35-1
0°C ≤ Ta ≤ 40°C



Ex ia I Ma IEC 60079-35-1
0°C ≤ Ta ≤ 40°C

SKU # CKL307



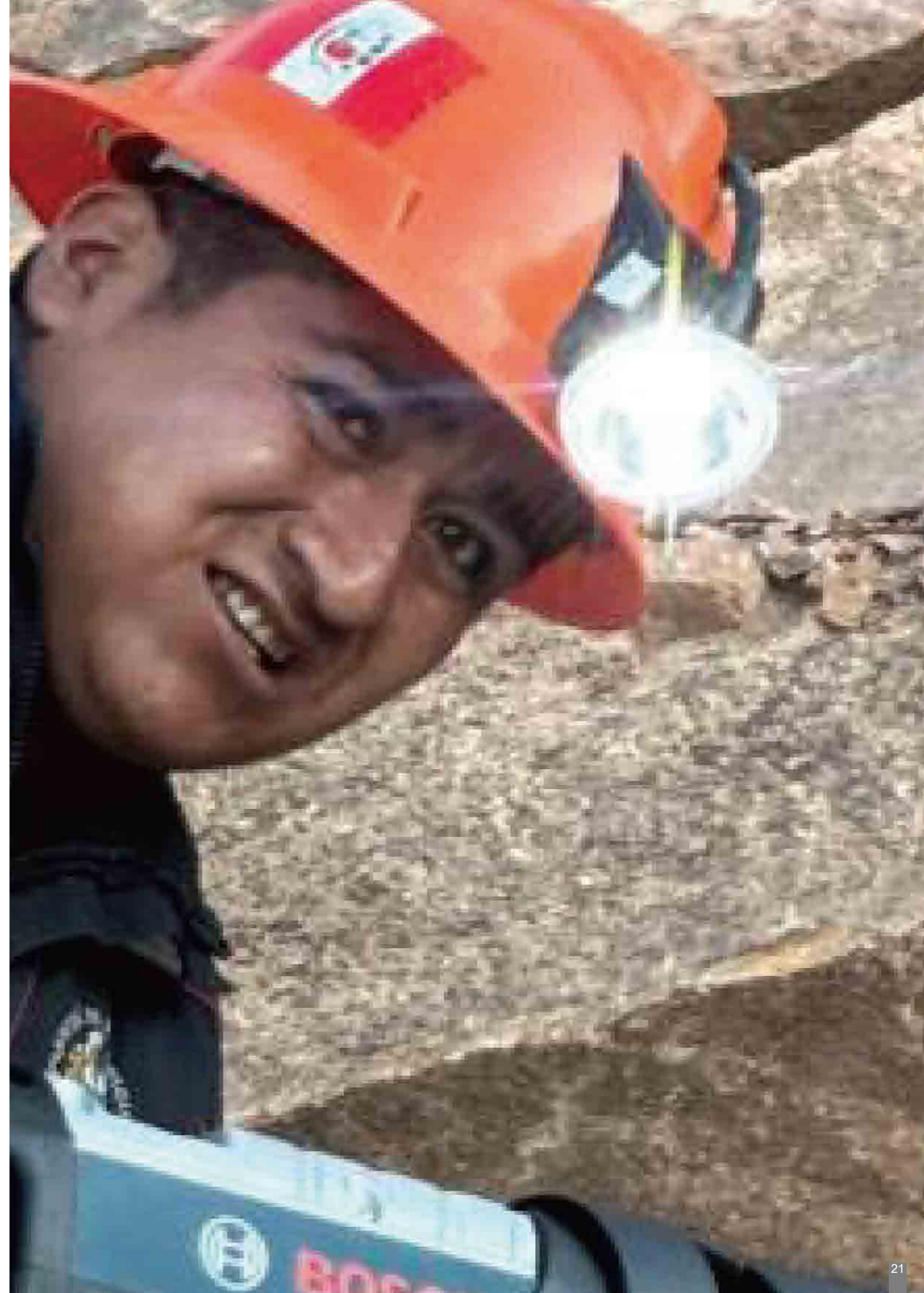
Material	Polycarbonate	Operating Modes	Low & High
Dimension	W 3.7" * D 1.5" * H 4.1"	Luminous Flux	82 Lm & 430 Lm
Weight	1.20 lbs	Illumination Intensity	11,000 Lux & 30,000 Lux
Battery Capacity	10,400 mAh	Run Time	60 H & 13 H
Battery Life Cycle	1,200 cycles	Illumination Range	210 m & 346 m
Input Voltage	4.2 V	Illumination Angle	120 degrees
LED Source Life	100,000 H	Waterproof	IP68 & IP69
LED Power	0.42 W & 2.67 W	Additional Features	S.O.S

KL9M

Intended for Use in Mine



SKU # CKL382



Material	Polycarbonate	Operating Modes	Low & High
Dimension	W 3.7" * D 1.5" * H 4.1"	Luminous Flux	82 Lm & 430 Lm
Weight	1.20 lbs	Illumination Intensity	11,000 Lux & 30,000 Lux
Battery Capacity	10,400 mAh	Run Time	60 H & 13 H
Battery Life Cycle	1,200 cycles	Illumination Range	210 m & 346 m
Input Voltage	4.65 V	Illumination Angle	120 degrees
LED Source Life	100,000 H	Waterproof	IP68 & IP69
LED Power	0.42 W & 2.67 W	Additional Features	S.O.S



KL9M

Intended for Use in Coal Mine



I M1 Ex ia I Ma EN 60079-35-1
0°C ≤ Ta ≤ 40°C



Ex ia I Ma IEC 60079-35-1
0°C ≤ Ta ≤ 40°C

SKU # CKL433



Material	Polycarbonate	Operating Modes	Low & High
Dimension	W 3.7" * D 1.5" * H 4.1"	Luminous Flux	82 Lm & 430 Lm
Weight	1.20 lbs	Illumination Intensity	11,000 Lux & 30,000 Lux
Battery Capacity	10,400 mAh	Run Time	60 H & 13 H
Battery Life Cycle	1,200 cycles	Illumination Range	210 m & 346 m
Input Voltage	4.65 V	Illumination Angle	120 degrees
LED Source Life	100,000 H	Waterproof	IP68 & IP69
LED Power	0.42 W & 2.67 W	Additional Features	S.O.S

KL12M

Intended for Use in Mine



SKU # CKL353



Material	Polycarbonate	Operating Modes	Low & High
Dimension	W 3.7" * D 1.5" * H 4.1"	Luminous Flux	82 Lm & 512 Lm
Weight	1.20 lbs	Illumination Intensity	11,000 Lux & 35,000 Lux
Battery Capacity	14,000 mAh	Run Time	60 H & 13 H
Battery Life Cycle	1,200 cycles	Illumination Range	210 m & 369 m
Input Voltage	4.56 V	Illumination Angle	120 degrees
LED Source Life	100,000 H	Waterproof	IP68 & IP69
LED Power	0.42 W & 3.24 W	Additional Features	S.O.S





KL12M

Intended for Use in Coal Mine in North America



SKU # CKL326



Material	Polycarbonate	Operating Modes	Low & High
Dimension	W 3.7" * D 1.5" * H 4.1"	Luminous Flux	82 Lm & 279 Lm
Weight	1.20 lbs	Illumination Intensity	11,000 Lux & 20,000 Lux
Battery Capacity	14,000 mAh	Run Time	60 H & 24 H
Battery Life Cycle	1,200 cycles	Illumination Range	210 m & 283 m
Input Voltage	4.56 V	Illumination Angle	120 degrees
LED Source Life	100,000 H	Waterproof	IP68 & IP69
LED Power	0.42 W & 1.50 W	Additional Features	S.O.S

KL12M

Intended for Use in Coal Mine

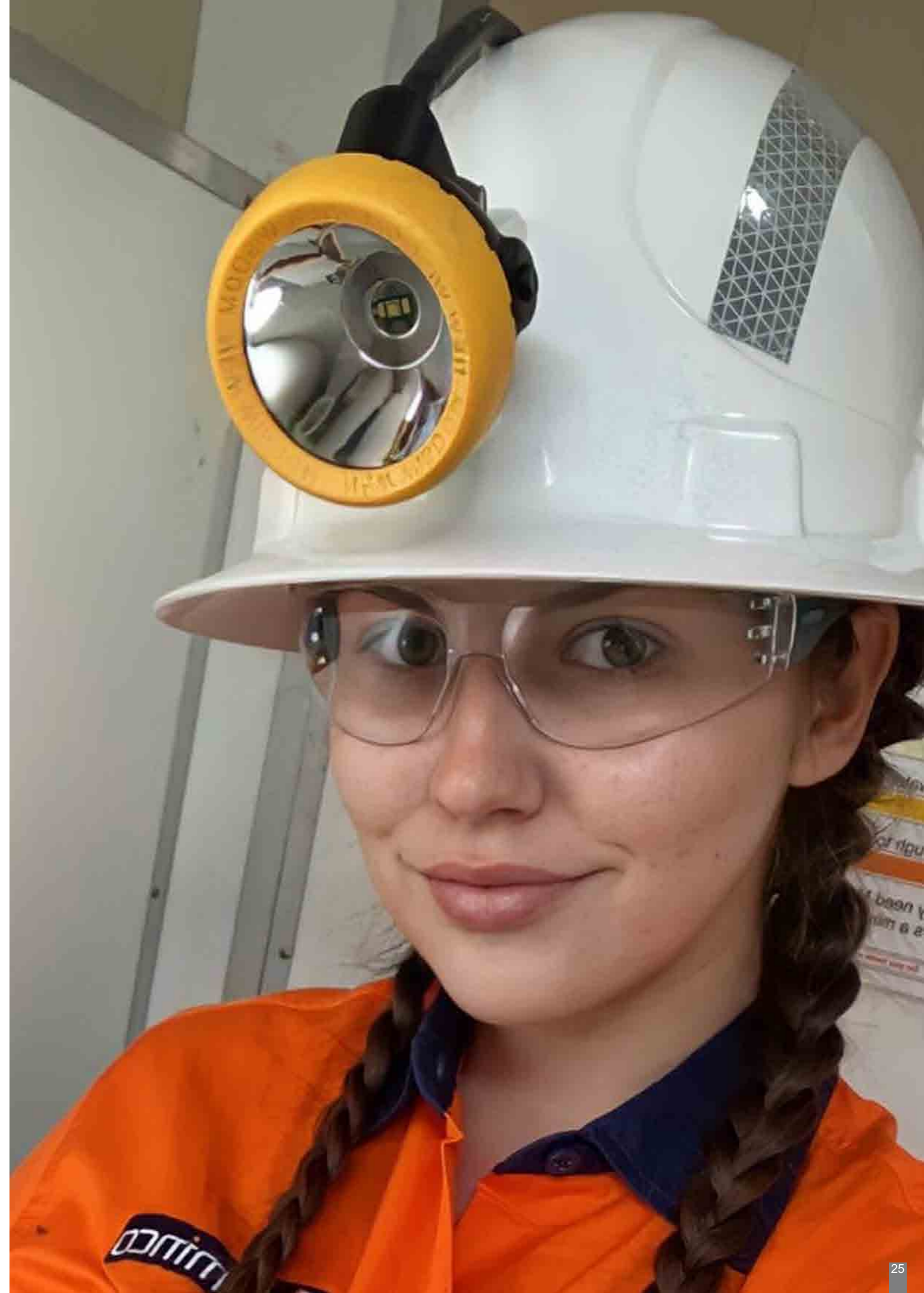


I M1 Ex ia I Ma EN 60079-35-1
0°C ≤ Ta ≤ 40°C



Ex ia I Ma IEC 60079-35-1
0°C ≤ Ta ≤ 40°C

SKU # CKL308



Material	Polycarbonate	Operating Modes	Low & High
Dimension	W 3.7" * D 1.5" * H 4.1"	Luminous Flux	82 Lm & 512 Lm
Weight	1.20 lbs	Illumination Intensity	11,000 Lux & 35,000 Lux
Battery Capacity	14,000 mAh	Run Time	60 H & 13 H
Battery Life Cycle	1,200 cycles	Illumination Range	210 m & 369 m
Input Voltage	4.2 V	Illumination Angle	120 degrees
LED Source Life	100,000 H	Waterproof	IP68 & IP69
LED Power	0.42 W & 3.24 W	Additional Features	S.O.S



KL13M

Intended for Use in Mine



SKU # CKL381



Material	Polycarbonate	Operating Modes	Low & High
Dimension	W 3.7" * D 1.5" * H 4.1"	Luminous Flux	82 Lm & 512 Lm
Weight	1.20 lbs	Illumination Intensity	11,000 Lux & 35,000 Lux
Battery Capacity	14,000 mAh	Run Time	60 H & 13 H
Battery Life Cycle	1,200 cycles	Illumination Range	210 m & 369 m
Input Voltage	4.65 V	Illumination Angle	120 degrees
LED Source Life	100,000 H	Waterproof	IP68 & IP69
LED Power	0.42 W & 3.24 W	Additional Features	S.O.S

KL13M

Intended for Use in Coal Mine



I M1 Ex ia I Ma EN 60079-35-1
0°C ≤ Ta ≤ 40°C



Ex ia I Ma IEC 60079-35-1
0°C ≤ Ta ≤ 40°C

SKU # CKL434




Material	Polycarbonate	Operating Modes	Low & High
Dimension	W 3.7" * D 1.5" * H 4.1"	Luminous Flux	82 Lm & 512 Lm
Weight	1.20 lbs	Illumination Intensity	11,000 Lux & 35,000 Lux
Battery Capacity	14,000 mAh	Run Time	60 H & 13 H
Battery Life Cycle	1,200 cycles	Illumination Range	210 m & 369 m
Input Voltage	4.65 V	Illumination Angle	120 degrees
LED Source Life	100,000 H	Waterproof	IP68 & IP69
LED Power	0.42 W & 3.24 W	Additional Features	S.O.S



Aurora Pro

Intended for Use in Potentially Explosive Gas Atmospheres
Excluding Coal Mine in North America


 I.S. Exi, CL I, Div.1, Grps C and D, T4
 -20°C ≤ Ta ≤ 40°C
 801112

SKU # CWT012



Material	Aluminum	Illumination Level	237 Levels
Dimension	L 7.7" * OD 2.6"	Luminous Flux	3,192 Lm
Weight	1.10 lbs	Illumination Intensity	120,000 Lux
Battery Capacity	14,000 mAh	Run Time	4.5 H(High) - 300 H(Low)
Battery Life Cycle	1,200 cycles	Illumination Range	2,000 m
Input Voltage	4.2 V	Illumination Angle	80 degrees
LED Source Life	100,000 H	Waterproof	IP68 & IP69
LED Power	21 W	Additional Features	S.O.S

Pharos 7

Intended for Use in Coal Mine in North America



Elastic Head Strap



Velcro Strap



Magnetic Strap



3M Dual Lock

- SKU # CKH063
- SKU # CKH059
- SKU # CKH062
- SKU # CKH061
- SKU # CKH060

Material	Polycarbonate	Operating Modes	Flash & Steady
Dimension	L 2.5" * W 1.9" * D 0.6"	Flash Lasting	46 H & 50 H
Weight	0.08 lbs	Steady Lasting	9.0 H & 9.5 H
Battery Capacity	700 mAh	LED Colors	Red, Blue, Green, Amber, White
Battery Life Cycle	500 cycles	Visible Range	400 m
Input Voltage	5 V	Waterproof	IP68 & IP69
LED Source Life	100,000 H	Additional Features	S.O.S





Duplex

Intended for Use in Law Enforcement



SKU # CKH110



Material	Polycarbonate	Operating Modes	Flash & Steady
Dimension	L 2.5" * W 1.9" * D 0.6"	Flash Lasting	43 H
Weight	0.08 lbs	Steady Lasting	9.5 H
Battery Capacity	700 mAh	LED Colors	Red & Blue
Battery Life Cycle	500 cycles	Visible Range	400 m
Input Voltage	5 V	Waterproof	IP68 & IP69
LED Source Life	100,000 H	Additional Features	S.O.S

ELF

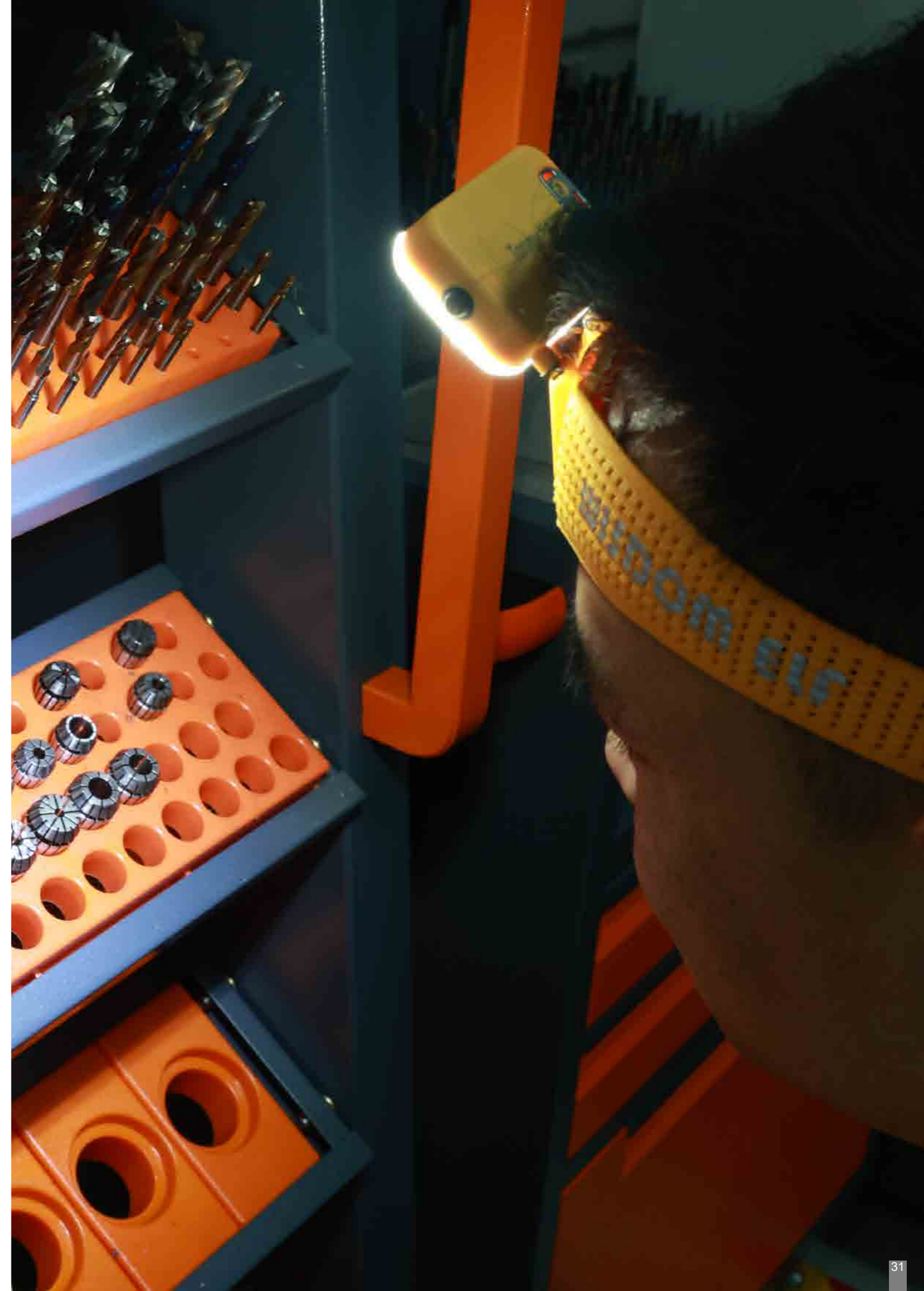
Intended for Use in MRO



SKU # CKH118



Material	Polycarbonate	Operating Modes	Low, Medium, High & Flash
Dimension	L 2.5" * W 1.8" * D 0.6"	Run Time	8.5 H, 4.5 H, 2.5 H & 95 H
Weight	0.12 lbs	Luminous Flux	90 Lm, 165 Lm & 315 Lm
Battery Capacity	1,500 mAh	LED Color on Flash	Red
Battery Life Cycle	500 cycles	Visible Range	400 m
Input Voltage	5 V	Waterproof	IP68 & IP69
LED Source Life	100,000 H	Additional Features	S.O.S



Helipad Hard Hat

Intended for Use in Mining and Industrial Applications

ANSI/ISEA Z89.1-2014 Approved Type I Class G
 CSA Z94.1-15 (R2024) Approved Type 1 Class G
 EN 397:2012+A1:2012 Approved
 AS/NZS 1801:1997+A1:1999 Approved Type 1
 GB 2811-2019 Approved T Z JG
 SABER Approved



- SKU # CPA002
- SKU # CPA005
- SKU # CPA004
- SKU # CPA007
- SKU # CPA006
- SKU # CPA017
- SKU # CPA008
- SKU # CPA009

Material	HDPE	Front Holder	Yes
Dimension	L 12.4" * W 10.6" * D 6.0"	Rear Holder	Yes
Weight	0.82 lbs	Size Range	53 - 64 CM 6 5/8 - 8
Style	Full Brim	Impact Protection	Type I / Type 1
Suspension Type	8-point with pin-lock adjustment	Electrical Class	Class G



Helipad Hard Hat

Intended for Use in Mining and Industrial Applications

ANSI/ISEA Z89.1-2014 Approved Type I Class G
 CSA Z94.1-15 (R2024) Approved Type 1 Class G
 EN 397:2012+A1:2012 Approved
 AS/NZS 1801:1997+A1:1999 Approved Type 1
 GB 2811-2019 Approved T Z JG
 SABER Approved



- SKU # CPA010
- SKU # CPA012
- SKU # CPA011
- SKU # CPA014
- SKU # CPA013
- SKU # CPA018
- SKU # CPA015
- SKU # CPA016

Material	HDPE	Front Holder	Yes
Dimension	L 12.4" * W 10.6" * D 6.0"	Rear Holder	No
Weight	0.82 lbs	Size Range	53 - 64 CM 6 5/8 - 8
Style	Full Brim	Impact Protection	Type I / Type 1
Suspension Type	8-point with pin-lock adjustment	Electrical Class	Class G





DurCore Panel Light

Intended for Use in Offices, Retail Stores
and Other Commercial Settings



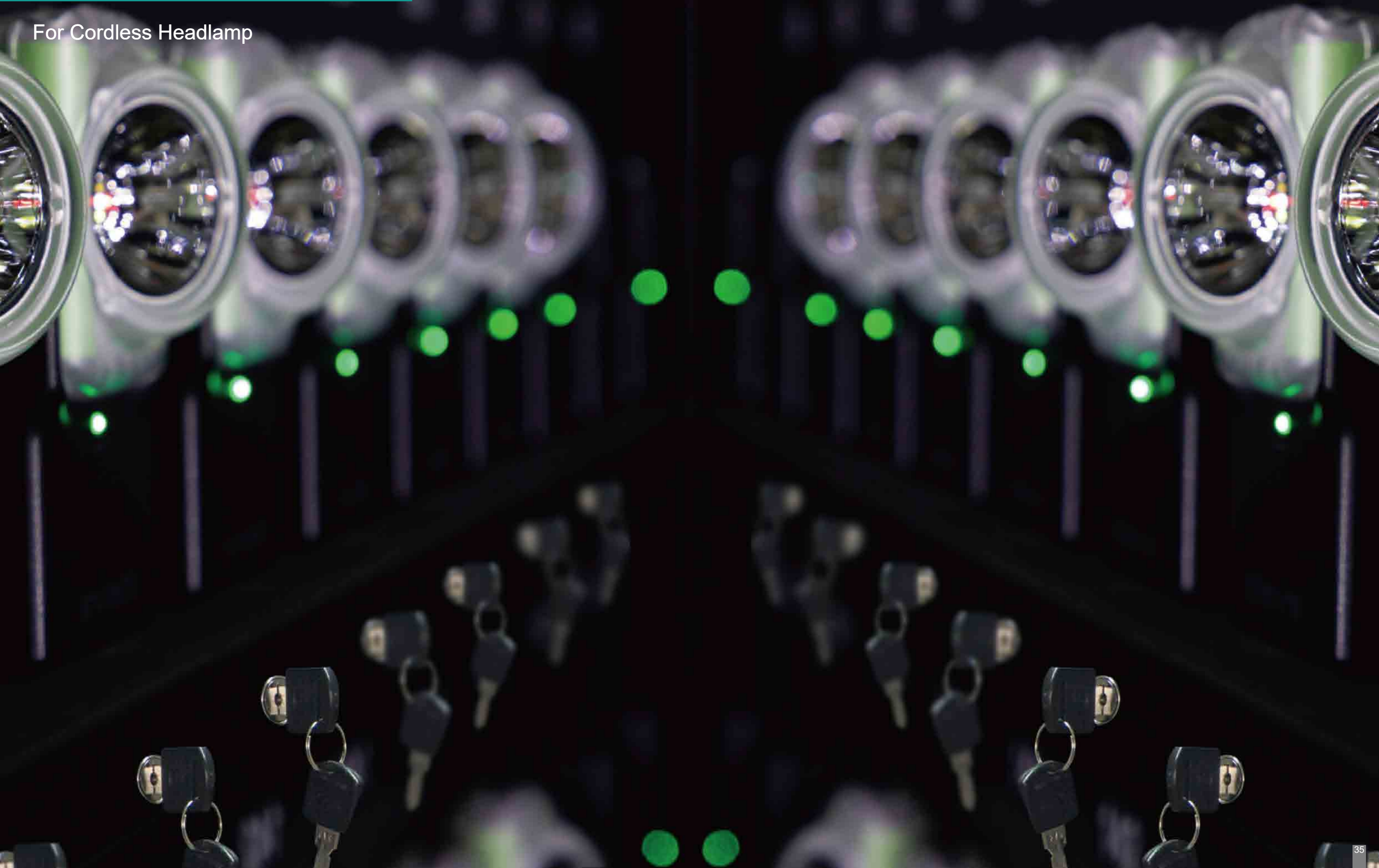
SKU # CWM002



Material	Polycarbonate	Luminous Efficacy	140 Lm / W
Dimension	L 23.7" * W 6.0" * D 1.2"	Luminous Flux	5,400 Lm
Weight	1.83 lbs	Illumination Angle	120 degrees
Dimmable	Yes	Color Temperature	4,000 K
AC Input	100 - 240 V, 50 -60 Hz	CRI	≥ 80
Power Factor	> 0.9	Color Tolerance	< 4

Charging Equipment

For Cordless Headlamp



NWCR-12B SKU # CCJ040 & **NWCR-12BL** SKU # CCJ224

Material	Cold-formed steel	AC Input	100-240 V, 50-60 Hz
Dimension	W 11.8" * D 9.1" * H 39.4"	DC Output Voltage	4.8 V & 6.8 V
Weight	68.34 lbs / 72.75 lbs	DC Output Current	2,000 mA
Power Cord	Available with US, EU, AU and UK plug		
Applicable Models	WISE LITE 2 (4.8V), WISDOM LAMP 3 / 4 (4.8V), WISDOM LAMP 6 (6.8V)		

NWCR-204B SKU # CCJ014 & **NWCR-204BL** SKU # CCJ238

Material	Cold-formed steel	AC Input	100-240 V, 50-60 Hz
Dimension	W 72.8" * D 14.0" * H 67.6"	DC Output Voltage	4.8 V & 6.8 V
Weight	709.88 lbs / 753.98 lbs	DC Output Current	2,000 mA
Power Cord	N/A, wiring required on power supply		
Applicable Models	WISE LITE 2 (4.8V), WISDOM LAMP 3 / 4 (4.8V), WISDOM LAMP 6 (6.8V)		

NWCR-24B SKU # CCJ044 & **NWCR-24BL** SKU # CCJ228

Material	Cold-formed steel	AC Input	100-240 V, 50-60 Hz
Dimension	W 22.8" * D 9.1" * H 39.4"	DC Output Voltage	4.8 V & 6.8 V
Weight	97 lbs / 105.82 lbs	DC Output Current	2,000 mA
Power Cord	Available with US, EU, AU and UK plug		
Applicable Models	WISE LITE 2 (4.8V), WISDOM LAMP 3 / 4 (4.8V), WISDOM LAMP 6 (6.8V)		

NWCR-5B SKU # CCJ262

Material	Cold-formed steel	AC Input	100-240 V, 50-60 Hz
Dimension	W 18.5" * D 7.1" * H 2.2"	DC Output Voltage	4.8 V & 6.8 V
Weight	5.56 lbs	DC Output Current	2,000 mA
Power Cord	Available with US, EU, AU and UK plug		
Applicable Models	WISE LITE 2 (4.8V), WISDOM LAMP 3 / 4 (4.8V), WISDOM LAMP 6 (6.8V)		

NWCR-36B SKU # CCJ048 & **NWCR-36BL** SKU # CCJ232

Material	Cold-formed steel	AC Input	100-240 V, 50-60 Hz
Dimension	W 33.9" * D 9.1" * H 39.4"	DC Output Voltage	4.8 V & 6.8 V
Weight	136.68 lbs / 145.50 lbs	DC Output Current	2,000 mA
Power Cord	Available with US, EU, AU and UK plug		
Applicable Models	WISE LITE 2 (4.8V), WISDOM LAMP 3 / 4 (4.8V), WISDOM LAMP 6 (6.8V)		

NWB-30 4.8V SKU # CCD116 & **NWB-30 6.8V** SKU # CCD090

Material	Polycarbonate	AC Input	100-240 V, 50-60 Hz
Dimension	W 4.5" * D 3.1" * H 1.4"	DC Output Voltage	4.8 V & 6.8 V
Weight	0.32 lbs	DC Output Current	2,000 mA
Power Cord	Available with US, EU, AU and UK plug		
Applicable Models	WISE LITE 2 (4.8V), WISDOM LAMP 3 / 4 (4.8V), WISDOM LAMP 6 (6.8V)		

NWCR-60B SKU # CCJ091 & **NWCR-60BL** SKU # CCJ236

Material	Cold-formed steel	AC Input	100-240 V, 50-60 Hz
Dimension	W 45.2" * D 7.0" * H 67.6"	DC Output Voltage	4.8 V & 6.8 V
Weight	268.96 lbs / 279.98 lbs	DC Output Current	2,000 mA
Power Cord	N/A, wiring required on power supply		
Applicable Models	WISE LITE 2 (4.8V), WISDOM LAMP 3 / 4 (4.8V), WISDOM LAMP 6 (6.8V)		

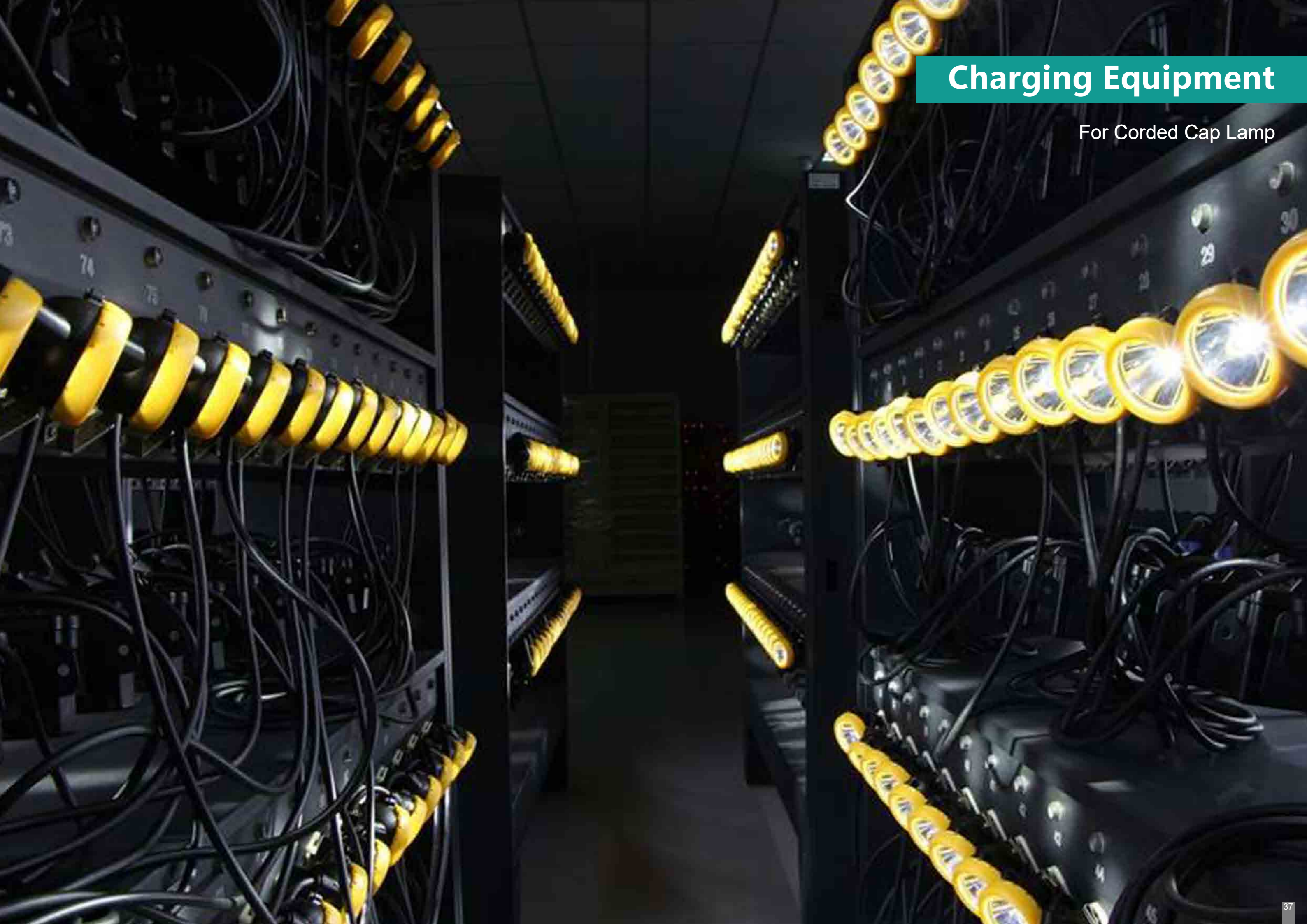
NWCR-120B SKU # CCJ039 & **NWCR-120BL** SKU # CCJ237

Material	Cold-formed steel	AC Input	100-240 V, 50-60 Hz
Dimension	W 45.2" * D 14.0" * H 67.6"	DC Output Voltage	4.8 V & 6.8 V
Weight	504.85 lbs / 548.95 lbs	DC Output Current	2,000 mA
Power Cord	N/A, wiring required on power supply		
Applicable Models	WISE LITE 2 (4.8V), WISDOM LAMP 3 / 4 (4.8V), WISDOM LAMP 6 (6.8V)		



Charging Equipment

For Corded Cap Lamp



NWCR-12 SKU # CCJ116 & NWCR-12A SKU # CCJ120

Material	Cold-formed steel	AC Input	100-240 V, 50-60 Hz
Dimension	W 11.8" * D 9.1" * H 39.4"	DC Output Voltage	4.2 V & 4.56 V
Weight	68.34 lbs	DC Output Current	1,600 mA & 2,400 mA
Power Cord	Available with US, EU, AU and UK plug		
Applicable Models	KL5M, KL8M, KL12M		

NWCR-24 SKU # CCJ124 & NWCR-24A SKU # CCJ128

Material	Cold-formed steel	AC Input	100-240 V, 50-60 Hz
Dimension	W 22.8" * D 9.1" * H 39.4"	DC Output Voltage	4.2 V & 4.56 V
Weight	97 lbs	DC Output Current	1,600 mA & 2,400 mA
Power Cord	Available with US, EU, AU and UK plug		
Applicable Models	KL5M, KL8M, KL12M		

NWCR-30 SKU # CCJ132 & NWCR-30A SKU # CCJ133

Material	Cold-formed steel	AC Input	100-240 V, 50-60 Hz
Dimension	W 45.1" * D 7.0" * H 67.6"	DC Output Voltage	4.2 V & 4.56 V
Weight	271.16 lbs	DC Output Current	1,600 mA & 2,400 mA
Power Cord	N/A, wiring required on power supply		
Applicable Models	KL5M, KL8M, KL12M		

NWCR-60 SKU # CCJ134 & NWCR-60A SKU # CCJ160

Material	Cold-formed steel	AC Input	100-240 V, 50-60 Hz
Dimension	W 45.5" * D 14.0" * H 67.6"	DC Output Voltage	4.2 V & 4.56 V
Weight	451.94 lbs	DC Output Current	1,600 mA & 2,400 mA
Power Cord	N/A, wiring required on power supply		
Applicable Models	KL5M, KL8M, KL12M		

NWCR-102 SKU # CCJ136 & NWCR-102A SKU # CCJ137

Material	Cold-formed steel	AC Input	100-240 V, 50-60 Hz
Dimension	W 73.1" * D 14.0" * H 67.6"	DC Output Voltage	4.2 V & 4.56 V
Weight	621.70 lbs	DC Output Current	1,600 mA & 2,400 mA
Power Cord	N/A, wiring required on power supply		
Applicable Models	KL5M, KL8M, KL12M		

NWCR-36A SKU # CCJ284

Material	Cold-formed steel	AC Input	100-240 V, 50-60 Hz
Dimension	W 33.8" * D 8.4" * H 39.4"	DC Output Voltage	4.65 V
Weight	136.68 lbs	DC Output Current	4,500 mA
Power Cord	Available with US, EU, AU and UK plug		
Applicable Models	KL6M, KL9M, KL13M		

NWCR-50A SKU # CCJ285

Material	Cold-formed steel	AC Input	100-240 V, 50-60 Hz
Dimension	W 45.1" * D 7.0" * H 67.6"	DC Output Voltage	4.65 V
Weight	271.16 lbs	DC Output Current	4,500 mA
Power Cord	N/A, wiring required on power supply		
Applicable Models	KL6M, KL9M, KL13M		

NWCR-100A SKU # CCJ257

Material	Cold-formed steel	AC Input	3/N/PE~100-240/380-415 V 50-60 Hz
Dimension	W 45.5" * D 14.0" * H 67.6"	DC Output Voltage	4.65 V
Weight	451.94 lbs	DC Output Current	4,500 mA
Power Cord	N/A, wiring required on power supply		
Applicable Models	KL6M, KL9M, KL13M		

NWCR-170A SKU # CCJ279

Material	Cold-formed steel	AC Input	3/N/PE~100-240/380-415 V 50-60 Hz
Dimension	W 73.1" * D 14.0" * H 67.6"	DC Output Voltage	4.65 V
Weight	621.70 lbs	DC Output Current	4,500 mA
Power Cord	N/A, wiring required on power supply		
Applicable Models	KL6M, KL9M, KL13M		

NWB-20 SKU # CCD112

Material	Polycarbonate	AC Input	100-240 V, 50-60 Hz
Dimension	W 4.5" * D 3.0" * H 2.0"	DC Output Voltage	4.2 V
Weight	0.42 lbs	DC Output Current	2,000 mA
Power Cord	Available with US, EU, AU and UK plug		
Applicable Models	KL5M, KL8M, KL12M		

NWB-25A SKU # CCD063

Material	Polycarbonate	AC Input	100-240 V, 50-60 Hz
Dimension	W 4.5" * D 3.0" * H 2.0"	DC Output Voltage	4.56 V
Weight	0.45 lbs	DC Output Current	2,400 mA
Power Cord	Available with US, EU, AU and UK plug		
Applicable Models	KL5M, KL8M, KL12M		

NWB-45A SKU # CCD120

Material	Polycarbonate	AC Input	100-240 V, 50-60 Hz
Dimension	W 4.5" * D 3.0" * H 0.8"	DC Output Voltage	4.65 V
Weight	0.28 lbs	DC Output Current	4,500 mA
Power Cord	Available with US, EU, AU and UK plug		
Applicable Models	KL6M, KL9M, KL13M		

Charging Equipment

For Flashlight



NWFR-5A SKU # CCJ270

Material	Cold-formed steel	AC Input	100-240 V, 50-60 Hz
Dimension	W 18.5" * D 7.0" * H 1.8"	DC Output Voltage	4.2 V
Weight	6.28 lbs	DC Output Current	5,000 mA
Power Cord	Available with US, EU, AU and UK plug		

NWF-50A SKU # CCD123

Material	Polycarbonate	AC Input	100-240 V, 50-60 Hz
Dimension	W 4.5" * D 3.0" * H 0.8"	DC Output Voltage	4.2 V
Weight	0.27 lbs	DC Output Current	5,000 mA
Power Cord	Available with US, EU, AU and UK plug		





Charging Equipment

For Personal Safety Strobe Light
& Industrial Safety Headlamp



NWBR-8A SKU # CCJ289

Material	Plastic & cold-formed steel	AC Input	100-240 V, 50-60 Hz
Dimension	W 13.4" * D 7.0" * H 1.2"	DC Output Voltage	5 V
Weight	2.60 lbs	DC Output Current	875 mA
Power Cord	Available with US, EU, AU and UK plug		

NWBR-144A SKU # CCJ293

Material	Cold-formed steel	AC Input	100-240 V, 50-60 Hz
Dimension	W 45.5" * D 6.8" * H 67.6"	DC Output Voltage	5 V
Weight	271.17 lbs	DC Output Current	875 mA
Power Cord	N/A, wiring required on power supply		

Industrial Safety Lights

					Cordless Headlamp																		Corded Cap Lamp		Flashlight	Safety Flasher		Industrial Headlamp
Certification	Safety Type	Region	Field	HazLoc	WISE LITE 2	WISDOM LAMP 3		WISDOM LAMP 4	WISDOM LAMP 6	KL5M		KL6M		KL8M		KL9M		KL12M		KL13M		AURORA PRO	PHAROS 7	DUPLEX	ELF			
					EX	Non-EX	EX	Non-EX	EX	Non-EX	EX	Non-EX	EX	Non-EX	EX	Non-EX	EX	Non-EX	EX	Non-EX	EX	Non-EX	EX	EX	Non-EX			
MSHA	EX	North America	Mining	N/A	■					■				■					■				■	■				
NEC 500	EX	North America	Surface	Class I Div. 1																		■						
ATEX M1	EX	EU	Mining	N/A					■			■		■							■							
ATEX Group II	EX	EU	Surface	ZONE 1 & 2																								
IECEX M1	EX	Global	Mining	N/A					■			■		■							■							
ANZEx	EX	Australia & New Zealand	Mining	N/A					■			■		■							■							
INMETRO	EX	Brazil	Mining	N/A					■			■		■							■							
INMETRO	EX	Brazil	Surface	ZONE 1 & 2																			■					
EAC	EX	Russia	Mining	N/A					■			■		■							■							
GGTN-K	EX	Kazakhstan	Mining	N/A					■			■		■							■							
CE	Electrical Safety	EU	N/A	N/A	■	■	■	■	■	■	■	■	■	■	■	■	■	■	■	■	■	■	■	■	■			
RoHS	Material Safety	EU	N/A	N/A	■	■	■	■	■	■	■	■	■	■	■	■	■	■	■	■	■	■	■	■	■			
IP68 & IP69	Ingress Protection	Global	N/A	N/A	■	■	■	■	■	■	■	■	■	■	■	■	■	■	■	■	■	■	■	■	■			
					MSHA	Non-EX	NEC 500 ATEX Group II INMETRO	Non-EX	ATEX M1 IECEX M1 ANZEx INMETRO EAC GGTN-K	Non-EX	MSHA	ATEX M1 IECEX M1 INMETRO EAC GGTN-K	Non-EX	ATEX M1 IECEX M1	Non-EX	MSHA	ATEX M1 IECEX M1 INMETRO EAC GGTN-K	Non-EX	MSHA	ATEX M1 IECEX M1	NEC 500	MSHA	MSHA	Non-EX				
Cordless Headlamp					7,000	7,000	7,000	7,000	7,000	7,800	8,700	7,800	7,800	7,800	10,400	11,600	10,400	10,400	10,400	14,000	14,000	14,000	14,000	14,000	14,000	1,500		
Cordless Headlamp					8,500	12,000	11,000	25,000	11,000	24,000	20,000	24,000	24,000	24,000	24,000	30,000	20,000	30,000	30,000	30,000	35,000	20,000	35,000	35,000	35,000	120,000		
Cordless Headlamp					167	265	240	533	240	340	279	340	340	340	340	430	279	430	430	430	512	279	512	512	512	3,192		
Cordless Headlamp					16	13	13	5	13	13	16	13	13	13	13	20	13	13	13	13	13	24	13	13	5	2.5		
Cordless Headlamp					185	219	210	316	210	310	283	310	310	310	346	283	346	346	346	369	283	369	369	369	2,000			
Safety Flasher																							50	46	43			
Safety Flasher																								9.5	9.0	9.5		
Safety Flasher																								400	400			

FEATURES & SPECIFICATIONS at a glance

REFERENCE GUIDE ON THE MARKING OF ELECTRICAL EQUIPMENT FOR USE IN UNDERGROUND MINES (North America)

Company Name	NEW WISDOM INVESTMENT LIMITED
Model	WISE LITE 2
Type of Equipment	PERMISSIBLE LED CAP LAMP ASSEMBLY
MSHA Marking	
MSHA Approval Number	19-A160002-0
Type of Protection	INTRINSIC SAFETY
Hazardous Atmosphere	METHANE-AIR MIXTURES ONLY, intended for use in underground coal and gassy underground metal mines.
Standard	30 CFR Part 19

NEW WISDOM INVESTMENT LIMITED
MODEL WISE LITE 2
PERMISSIBLE LED CAP LAMP ASSEMBLY

APPROVAL NO. 19-A160002-0

TESTED FOR INTRINSIC SAFETY IN METHANE-AIR MIXTURES ONLY

Warnings:
 1. The batteries are not to be replaced by the user.
 2. The cap lamp is only to be charged in above-ground locations with a New Wisdom WISE LITE 2 charger.

REFERENCE GUIDE ON THE MARKING OF ELECTRICAL EQUIPMENT FOR USE IN UNDERGROUND MINES (Pennsylvania)

PA Approval Number	BFE 2116
Hazardous Atmosphere	METHANE-AIR MIXTURES ONLY, intended for use in underground coal and gassy underground metal mines.
Standard	Pennsylvania Bituminous Coal Mine Act

Commonwealth of PA
BFE 2116



EXPLOSION PROTECTION

Type of Protection	Symbol Alternative	Zone	Main Application	Standard
Increased safety "e"	eb ec	1 2	Terminals and terminal boxes, squirrel cage rotors, lights	IEC 60079-7 EN 60079-7
Flameproof enclosure "d"	da db dc	0 1 2	Switchgear and control gear, command and display devices, motors	IEC 60079-1 EN 60079-1
Pressurised enclosure "p"	pxb pyb pzc	1, 21 1, 21 2, 22	Switchgear and control cabinets, large motors	IEC 60079-2 EN 60079-2
Intrinsic safety "i"	ia ib ic	0, 20 1, 21 2, 22	Instrumentation and control technology, fieldbus technology, sensors	IEC 60079-11 EN 60079-11
Liquid immersion "o"	ob oc	1 2	Transformers	IEC 60079-6 EN 60079-6
Powder filling "q"	q	1	Sensors, electronic components, electronic ballasts	IEC 60079-5 EN 60079-5
Encapsulation "m"	ma mb mc	0, 20 1, 21 2, 22	Sensors, electronic components	IEC 60079-18 EN 60079-18
Protection type "n"	nA nC nR	2 2 2	Electrical equipment for Zone 2	IEC 60079-15 EN 60079-15
Optical radiation "op"	op is op sh op pr	0 0 1	op is = inherently safe optical radiation op sh = optical radiation interlock op pr = protected optical radiation	IEC 60079-28 EN 60079-28
Protection by enclosure "H"	ta tb tc	20 21 22	Switchgear and control gear, control, connection, and terminal boxes, motors, lights	IEC 60079-31 EN 60079-31

Temperature Class	Maximum Surface Temperature Permitted
T1	450 °C
T2	300 °C
T3	200 °C
T4	135 °C
T5	100 °C
T6	85 °C

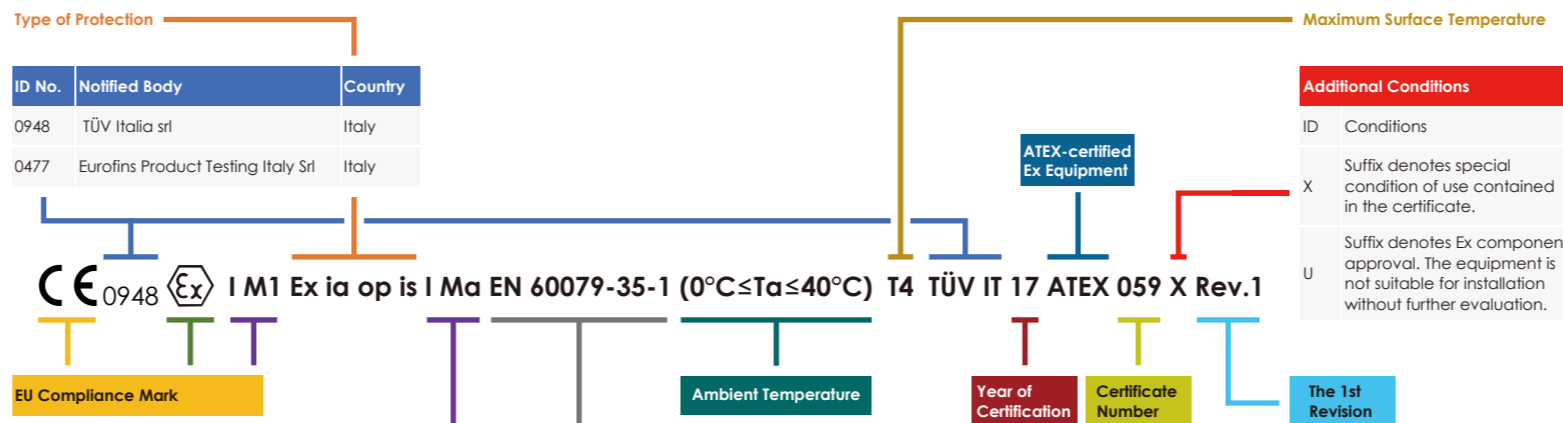
IP (INGRESS PROTECTION) Ratings
 IP suitability ratings are a system for classifying the degree of protection provided by enclosures of electrical equipment.



Protection against Solid Objects

Degree of protection for persons against access to hazardous parts inside the enclosure and/or against the ingress of solid objects.

IP Rating	Description	IP Rating	Description
0	No protection	0	No protection
1	Objects greater than 50 mm, accidental touch by hands	1	Protected against vertically falling drops of water
2	Objects greater than 12 mm, accidental touch by fingers	2	Protected against direct sprays of water 15° from vertical
3	Objects greater than 2.5 mm, e.g. tools/wires	3	Protected against sprays of water to 60° from vertical
4	Objects greater than 1 mm, e.g. tools/wires/small wires	4	Protected against water sprayed from all directions - limited ingress permitted
5	Protected against dust - limited ingress (no harmful deposits)	5	Protected against low pressure jets of water from all directions - limited ingress permitted
6	Totally protected against dust (Dust-tight)	6	Protected against strong pressure jets of water, heavy seas - limited ingress permitted
7	Protection against the effects of immersion between 15cm - 1 m	7	Protection against the effects of immersion between 15cm - 1 m
8	Protection against long periods of immersion under a quoted pressure, e.g. 2 bar at 24 hours	8	Protection against long periods of immersion under a quoted pressure, e.g. 2 bar at 24 hours
9	IP69k Automotive standard DIN40050-9 and signifies resistance to high temperature (up to 80°C) as well as high pressure jets of water (up to 80bar) from any angle	9	IP69k Automotive standard DIN40050-9 and signifies resistance to high temperature (up to 80°C) as well as high pressure jets of water (up to 80bar) from any angle



Equipment Group	Type of Industries	Explosive Atmosphere	Gas and Dust Group	Typical Gas / Dust	Presence of Explosive Atmosphere	Zone Classification	Equipment Category	EPL	Type of Protection
I	Mining	Methane and Dust	I	Methane	Equipment remains energised in explosive atmosphere.	M1	Ma	ia	
					Equipment is de-energised in explosive atmosphere.	M2	Mb	ib	
II	Above Ground Industries	Gas Vapor Mist	IIA	Propane	Constantly, frequently or long-term	Zone 0	1G	Ga	ia
				Ethylene	Occasionally	Zone 1	2G	Gb	ib
				Hydrogen	Seldom and short-term	Zone 2	3G	Gc	ic
		Dust Fibres Flyings	IIIB	Combustible Flyings	Constantly, frequently or long-term	Zone 20	1D	Da	ia
				Non-Conductive Dust	Occasionally	Zone 21	2D	Db	ib
				Conductive Dust	Seldom and short-term	Zone 22	3D	Dc	ic

TEST STANDARDS	Description
IEC / EN 60079-0	Explosive atmospheres - Part 0: Equipment - General requirements
IEC / EN 60079-11	Explosive atmospheres - Part 11: Equipment protection by intrinsic safety "i"
IEC / EN 60079-28	Explosive atmospheres - Part 28: Protection of equipment and transmission systems using optical radiation
IEC / EN 60079-35-1	Explosive atmospheres - Part 35-1: Caplights for use in mines susceptible to firedamp - General requirements - Construction and testing in relation to the risk of explosion

Notified Body: SGS

Intrinsically Safe: I.S. Exi

Explosion Protection Type: CL I

Gas Group: Grps C and D

Temperature Group: T4

Ambient Temperature: $-20^{\circ}\text{C} \leq T_a \leq 40^{\circ}\text{C}$

Area Classification: Div. 1

Division 1 - Approved for the strictest Division, therefore both Divisions

- Division 1 - Ignitable concentrations of flammable gas, vapors or liquids exist continuously, intermittently or periodically under normal operating conditions
- Division 2 - Flammable substances are not likely to exist under normal operating conditions

Certification Code: 801112